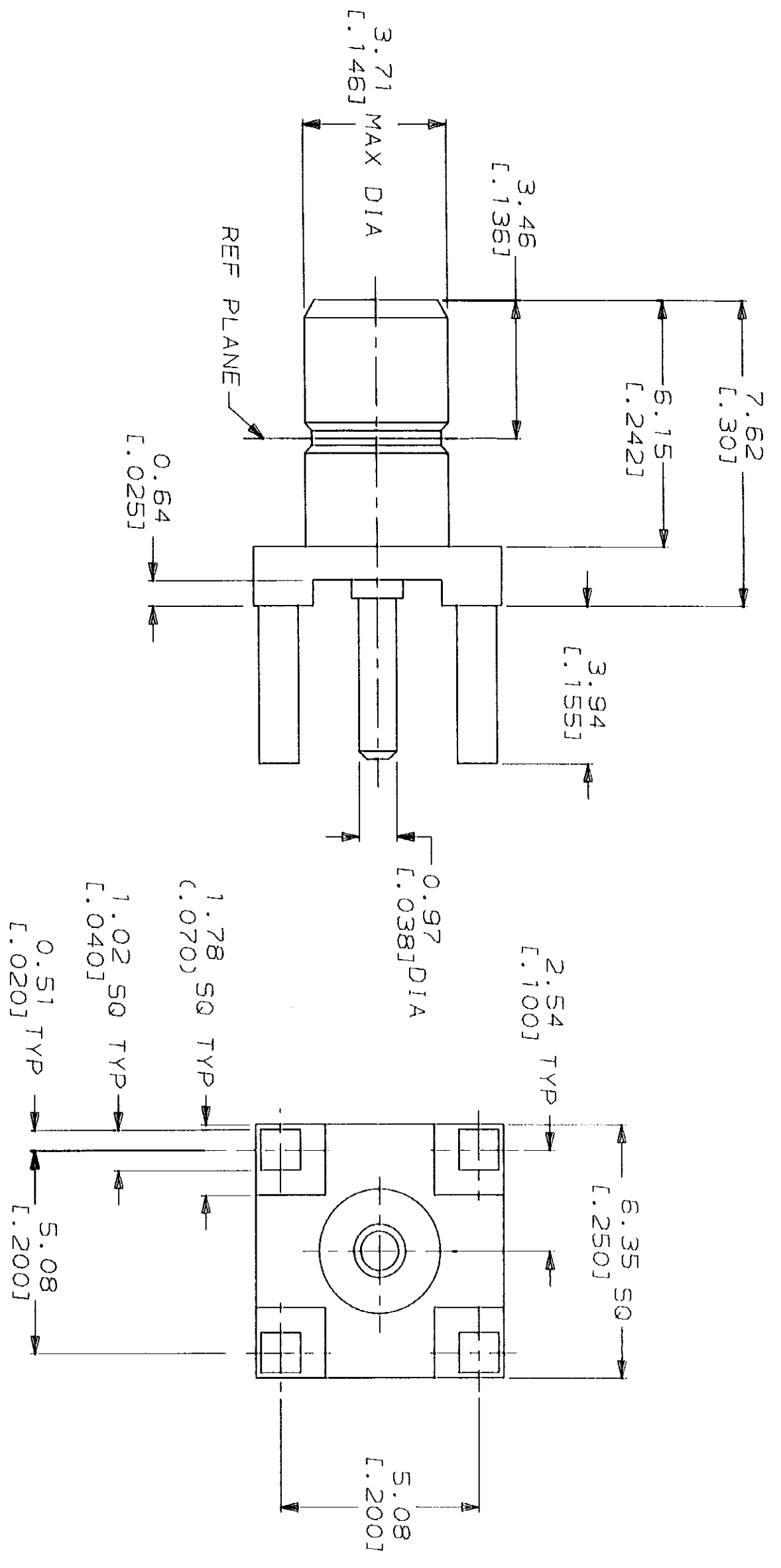


LOC	DIST	REV	ZONE	TR	DESCRIPTION	DATE	APPD
AJ	16						
		0			REMOVE .213, ADD DIM .30	10/17/90	KH
		B			REVISED NOTES REL WAS 90-3348-020, REV A	10/29/90	KH
		C			REL PR 90-3348-025 CHG PAD DIM FROM .060 TO .070	12/10/90	KH
		D			REV PER ECN AJ-5387	2/15/90	KH



1. MATERIALS:
 BODY... BRASS
 CONTACT... BRASS
 DIELECTRIC... TEFLON
2. FINISH:
 BODY AND CENTER CONTACT...
 GOLD PER MIL-G-45204 OVER
 NICKEL PER QQ-N-290.
3. FINISH:
 BODY... NICKEL
 PER QQ-N-290 OVER
 COPPER PER MIL-C-14550.
4. FINISH:
 CENTER CONTACT... GOLD
 PER MIL-G-45204 OVER
 NICKEL PER QQ-N-290.
5. INTERFACE PER MIL-C-39012.

6	413990-3	
3	413990-2	
2	413990-1	
NOTES	ASSY NO	

DO NOT SCALE PRINT.
 UNLESS SPECIFIED (INCHES)
 DIMENSIONS IN mm
 TOLERANCES ON:
 2 PLC DEC ± .25
 3 PLC DEC ± .130
 ANGLES
 MATERIAL

DR *J. McLeod* 9/27/90
 APPD J. McLEOD 9/27/90
 APPD J. McLEOD 9/28/90
 APPD K. HELBIG 12/10/90
 PRODUCT SPEC

AMP
 AMP Incorporated
 Harrisburg, PA 17105-3608
 JACK, RCPT, STR, SMB/PCB

FINISH SEE NOTES
 APPLICATION SPEC
 WEIGHT
 SIZE CAGE CODE DRAWING NO
 00779 413990
 SCALE 8:1 SHEET 1 OF 1

